

Introduction of PT. Berlian Amal Perkasa



1. Basic Profile

■ Company Name	PT. Berlian Amal Perkasa (BAP)
■ Business Contents	Construction service including equipment rental with operator
■ Establish/Capital	May, 2014 (Start biz from Dec, 2014) / USD 17,430,000
■ Shareholders	Mitsubishi Corporation (40%, Japan) Nikken Corporation (20%, Japan) <i>*100% subsidiary of Mitsubishi Corp</i> PT. Guna Teguh Abadi (40%, Indonesia)
■ Rental Fleet	Crane 51units/AWP 24units/TMC 4units/FL 3units <i>*as of Jul, 2016</i>
■ Employee	Office Staff: 13, Mechanic: 7, Operator: 73 <i>*as of Jul, 2016</i>
■ Head Office	Sovereign Plaza 6F, Jl. TB. Simatupang Kav. 36 Jakarta
■ Machine Yard	Jl. Raya Bojonegara RT-01/W-04 Desa Kedaleman Kec. Cibeber Kotamadya Cilegon, Banten
■ Temp Machine Yard	Greenland International Industrial City (GIIC), Cikarang, Jawa Barat

2. Location



Cilegon Machine Yard



Temp Machine Yard (planning)



Jakarta Head Office

Temp Machine Yard



3. Rental Fleet Line-up

■ Product Line-up:

Lifting Crane



Aerial Working Platform



Truck Mounted Crane

NEW



Forklift

NEW

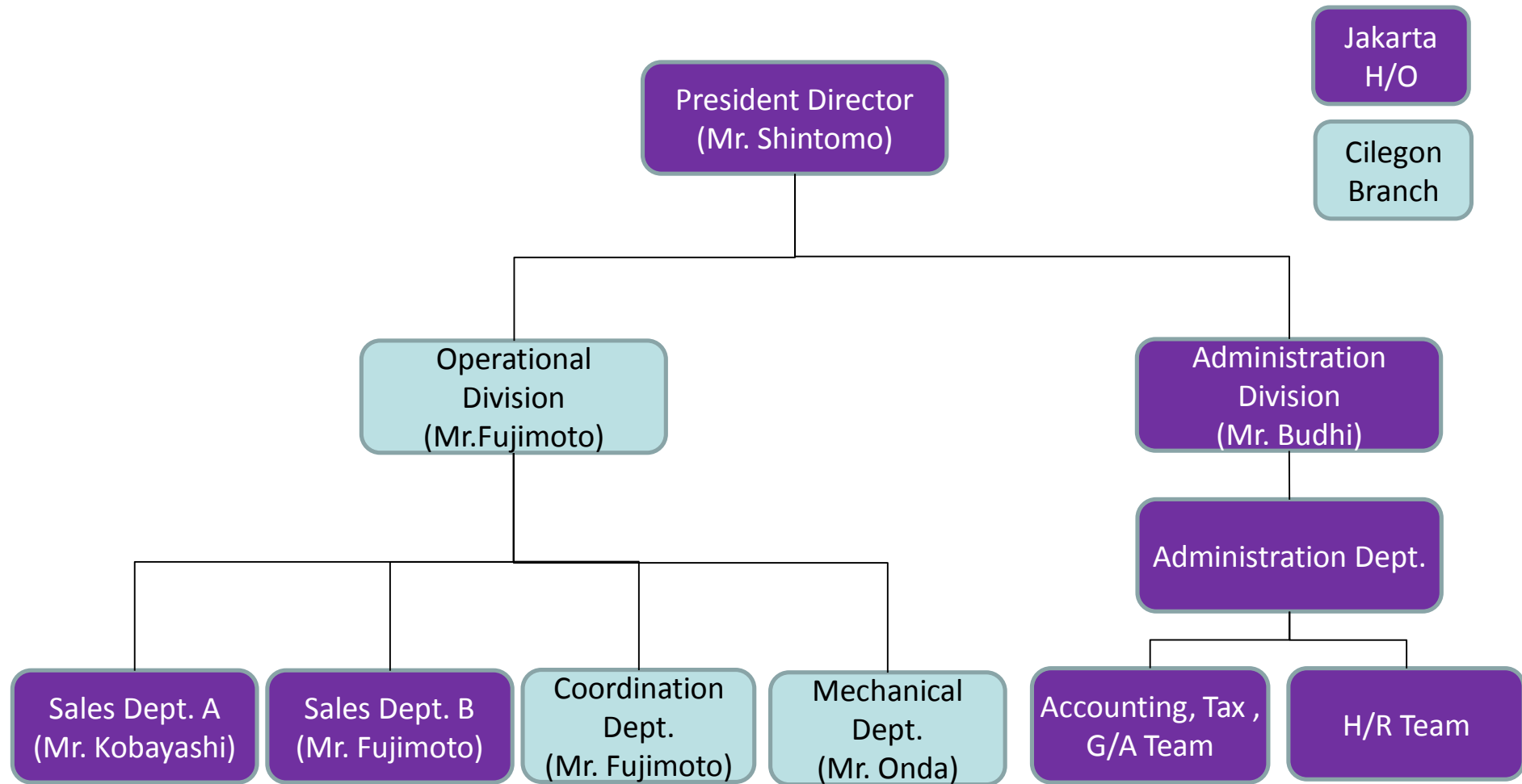


Planning



4. Organization Chart

* from 10th May, 2016



5. BAP Safety Program

Equipment

- Brand new and good quality used equipment
- Preventative inspection (Previous & Monthly Inspection)
- Replacing consumable parts in maker standard
- Using genuine parts
- Wire control
- Safety device installation in BAP standard
- Field maintenance/repair
- Attaching caution sticker

Operator

- Monthly site survey by operator controller
- Applying company policy through internal guidance
- High standard operator interview and testing
- Periodical MCU
- Internal education program for operation skill, maintenance knowledge supported by Manufacturer.

Others

- Safety lesson of equipment for foreman, workers at client site
- Providing materials (accident poster, signal hand book etc.)
- Engineering advice for equipment selection based on client drawing
- Ground condition confirmation advice
- Ass/Disass service

MONTHLY CHECK SHEET FOR ROUGH TERRAIN CRANE 1/3

MODEL	MAINDER NO.	CUSTOMER NAME
KR-25H-V2	ME-17	SOWJ
SERIAL	DATE	RESPONSIBLE PERSON OF A SITE
071253	24-Feb-15	MRT104 & MRT105

GENERAL	INSPECTION PARTS AND CONTENTS	RESULT OF INSPECTION	COMPLETION DATE
GENERAL	GENERAL SUPERVISOR		
	ENGINE OIL LEAKAGE AMOUNT		
	COOLING WATER AMOUNT LEAK		
	COOLING FAN CONDITION		
	RADIATOR CONDITION FILLER OF AIR/DAMAGE		
	FUEL FILTER		
	FUEL LEAK FUEL FILTER INJECTION PUMP		
	WATER PUMP CONDITION		
	BATTERY FLUID AMOUNT / SPEEDOMETER		
	BATTERY TERMINAL CONDITION		
	START-UP OF THE ENGINE		
	WATER TEMPERATURE METER		
	WATER TEMPERATURE METER		
	WATER TEMPERATURE METER		
	WATER TEMPERATURE METER		
WATER TEMPERATURE METER			
OPERATION	WATER TEMPERATURE METER		
	WATER TEMPERATURE METER		
	WATER TEMPERATURE METER		
	WATER TEMPERATURE METER		
	WATER TEMPERATURE METER		
	WATER TEMPERATURE METER		
	WATER TEMPERATURE METER		
	WATER TEMPERATURE METER		
	WATER TEMPERATURE METER		
	WATER TEMPERATURE METER		
	WATER TEMPERATURE METER		
	WATER TEMPERATURE METER		
	WATER TEMPERATURE METER		
	WATER TEMPERATURE METER		
	RUNNING	WATER TEMPERATURE METER	
WATER TEMPERATURE METER			
WATER TEMPERATURE METER			
WATER TEMPERATURE METER			
WATER TEMPERATURE METER			
WATER TEMPERATURE METER			
WATER TEMPERATURE METER			
WATER TEMPERATURE METER			
WATER TEMPERATURE METER			
WATER TEMPERATURE METER			
WATER TEMPERATURE METER			
WATER TEMPERATURE METER			
WATER TEMPERATURE METER			
WATER TEMPERATURE METER			

INSPECTOR (SIGNATURE) _____ CUSTOMER SIGNATURE _____

SYMBOL OF : GOOD : V EXCHANGE OF PARTS : X CLEANING : C TIGHTEN : T LUBRICATION : L
 INSPECTION : REPAIR : A ADJUSTMENT : A NOT APPLICABLE : -



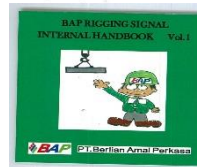
BAP PT. Berlian Amal Perkasa

MONTHLY OPERATOR SURVEY SHEET

Inspector	Operator	Controller
Sign	Sign	Sign
Date	Date	Date

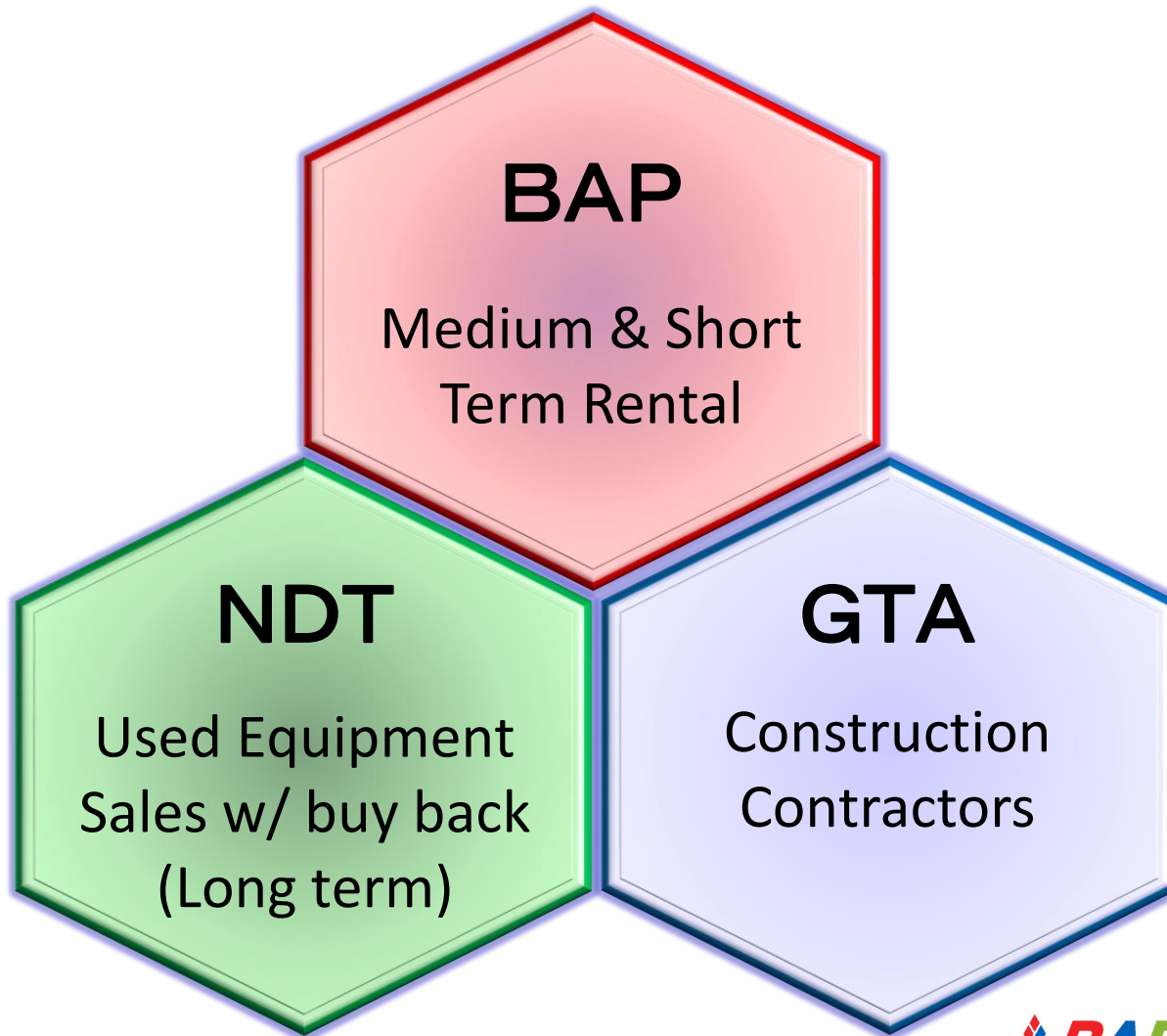
NO.	ITEMS TO BE CHECKED	DATE	RESULT
1	Check engine oil level and condition		
2	Check engine oil level and condition		
3	Check engine oil level and condition		
4	Check engine oil level and condition		
5	Check engine oil level and condition		
6	Check engine oil level and condition		
7	Check engine oil level and condition		
8	Check engine oil level and condition		
9	Check engine oil level and condition		
10	Check engine oil level and condition		
11	Check engine oil level and condition		
12	Check engine oil level and condition		
13	Check engine oil level and condition		
14	Check engine oil level and condition		
15	Check engine oil level and condition		
16	Check engine oil level and condition		
17	Check engine oil level and condition		
18	Check engine oil level and condition		
19	Check engine oil level and condition		
20	Check engine oil level and condition		

INSPECTOR (SIGNATURE) _____ CUSTOMER SIGNATURE _____



6. Additional Function

We provide a total solution of machinery supply



7. Owning Equipment

■ BAP

Equipment	Cap	Qty
Crawler Crane	250t	2
Crawler Crane	180t	3
All Terrain Crane	60-160t	2
Crawler Crane	55-90t	11
Rough Terrain Crane	25t-60t	33
Boom Lift	21-30m	11
Scissors Lift	9.8m	13
Truck Mounted Crane	5t	4
Forklift	5-10t	3

■ GTA(Partial)

Equipment	Cap	Qty
Crawler Crane	1350t	2
Crawler Crane	800t	1
Crawler Crane	450-550t	5
Crawler Crane	250t	6
All Terrain Crane	160t	4
Rough Terrain Crane	40-80t	22
Boom Lift	15-30m	18
Scissors Lift	9.8m	5